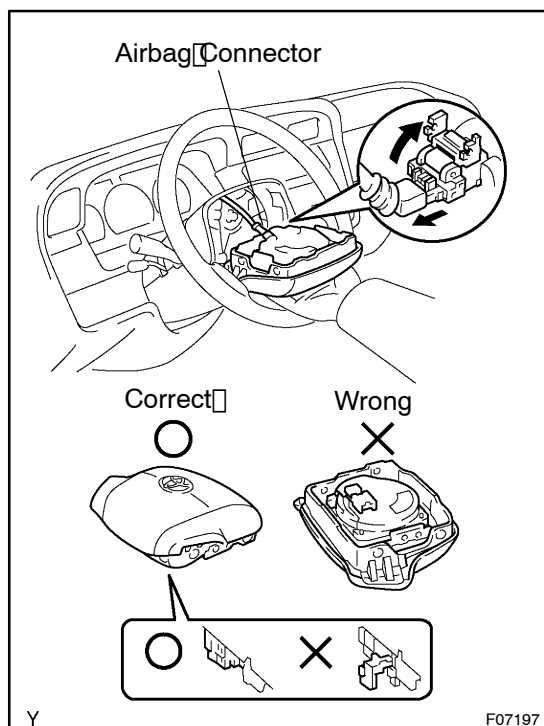


REMOVAL

1. REMOVE STEERING WHEEL PAD

NOTICE:

- If the airbag connector is disconnected with the ignition switch at ON or ACC, DTCs will be recorded.
- Never use airbag parts from another vehicle. When replacing parts, replace with new ones.



- Place the front wheels facing straight ahead.
- Remove 2 steering wheel lower No. 2 covers.
- Using a Torx socket wrench (T30), loosen 2 Torx screws.

HINT:

Loosen 2 screws until the groove along the screw circumference catches on the screw case.

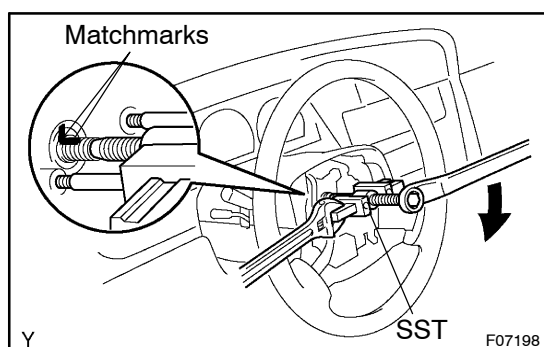
- Pull out the steering wheel pad from the steering wheel.
- Disconnect the airbag connector (See page RS-2)
- Disconnect the connector.

CAUTION:

- When storing the wheel pad, keep the upper surface of the pad facing upward.
- Never disassemble the wheel pad.

NOTICE:

When removing the wheel pad, take care not to pull the air-bag wire harness.



2. REMOVE STEERING WHEEL

- Remove the steering wheel set nut.
- Place matchmarks on the steering wheel and main shaft assembly.
- Using the SST, remove the wheel.

SST 09950-50012 (09951-05010, 09952-05010, 09953-05020, 09954-05020)

3. REMOVE UPPER AND LOWER COLUMN COVERS

Remove 3 screws, upper and lower column covers.

4. REMOVE FUEL LID OPENER

Remove 2 screws and the fuel lid opener.

5. REMOVE LOWER RH FINISH PANEL

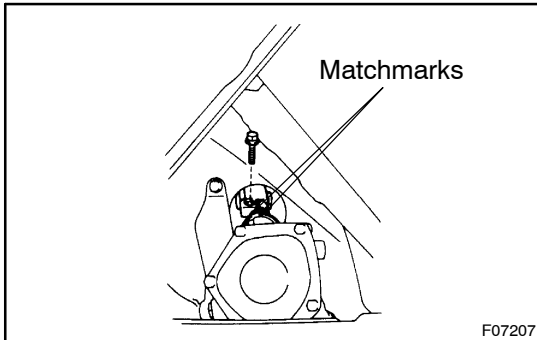
- Remove the screw and the lower RH finish panel.
- Disconnect the speaker connector.

6. REMOVE COMBINATION SWITCH WITH SPIRAL CABLE

- (a) Disconnect the airbag connector.
- (b) Disconnect 3 connectors.
- (c) Remove 3 screws and combination switch.

7. REMOVE SPIRAL CABLE (See page BE-7)**NOTICE:**

Do not disassemble the cable or apply oil to it.

**8. DISCONNECT MAIN SHAFT**

- (a) Place matchmarks on the control valve shaft and sliding yoke.
- (b) Remove the bolt.

9. REMOVE STEERING COLUMN ASSEMBLY

Remove 6 bolts, nut and steering column assembly.